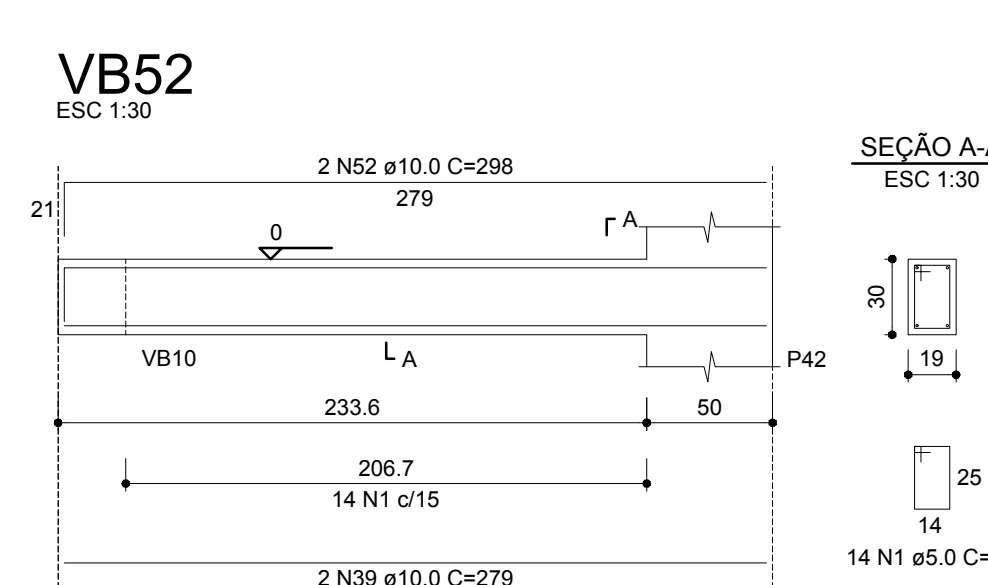
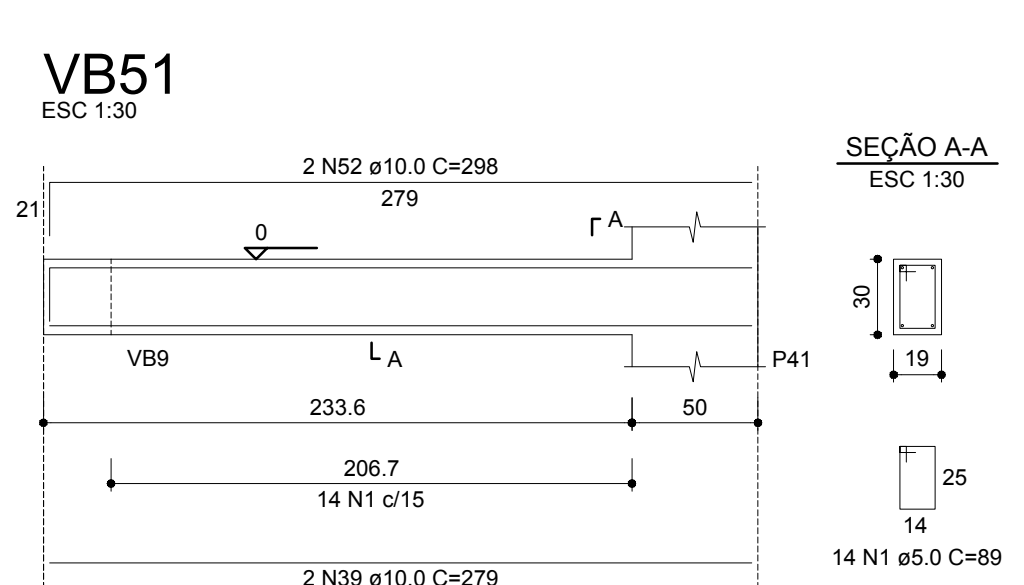
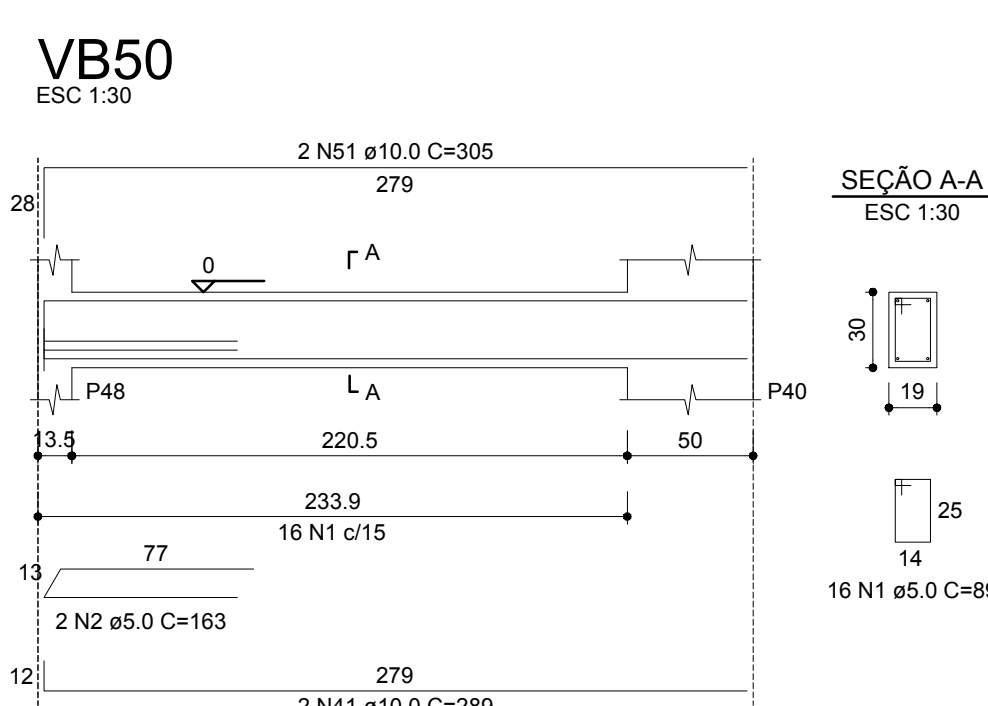
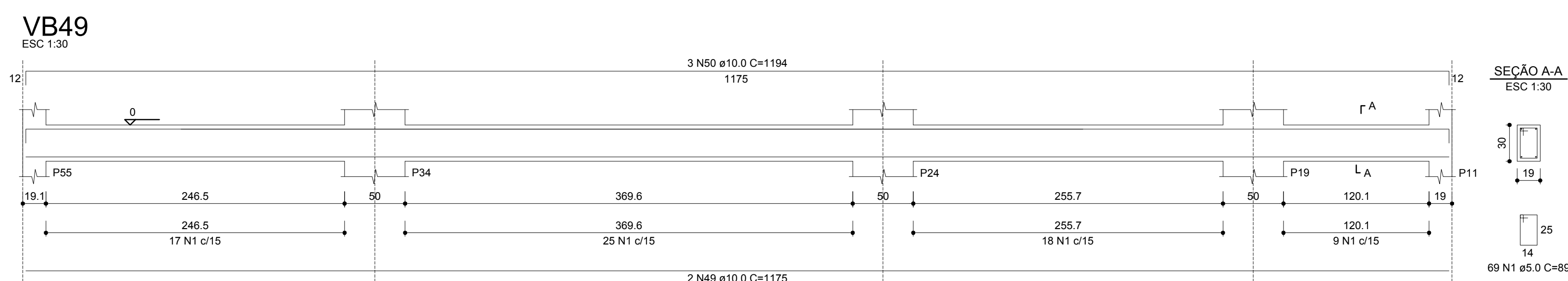
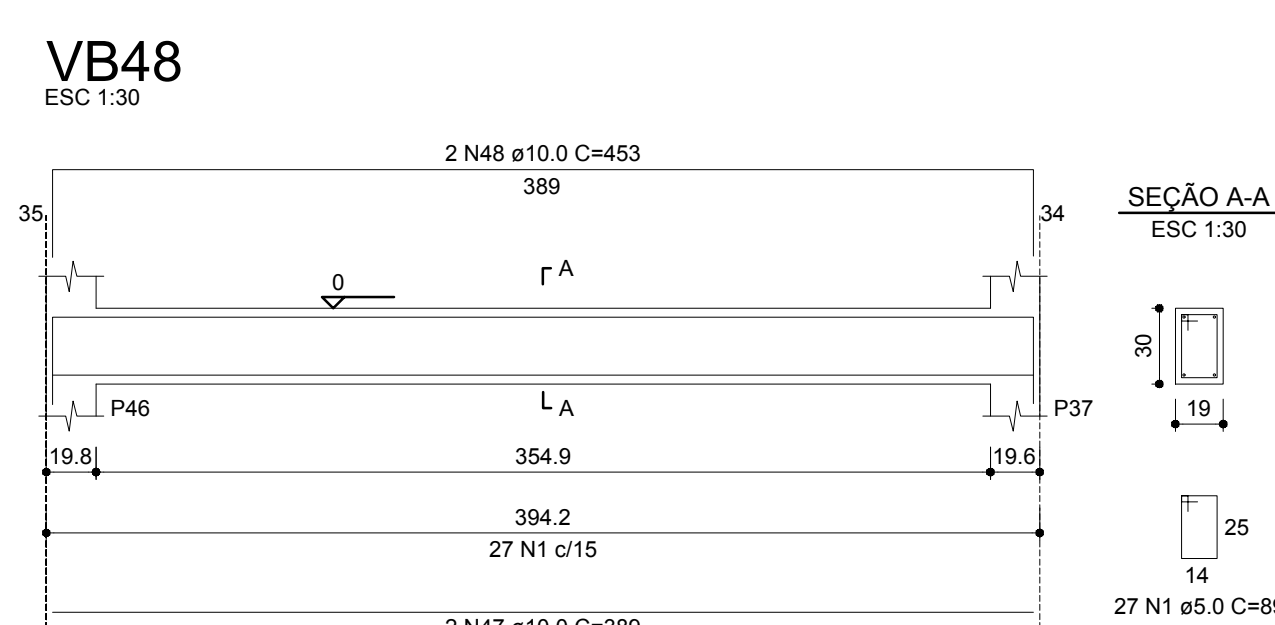
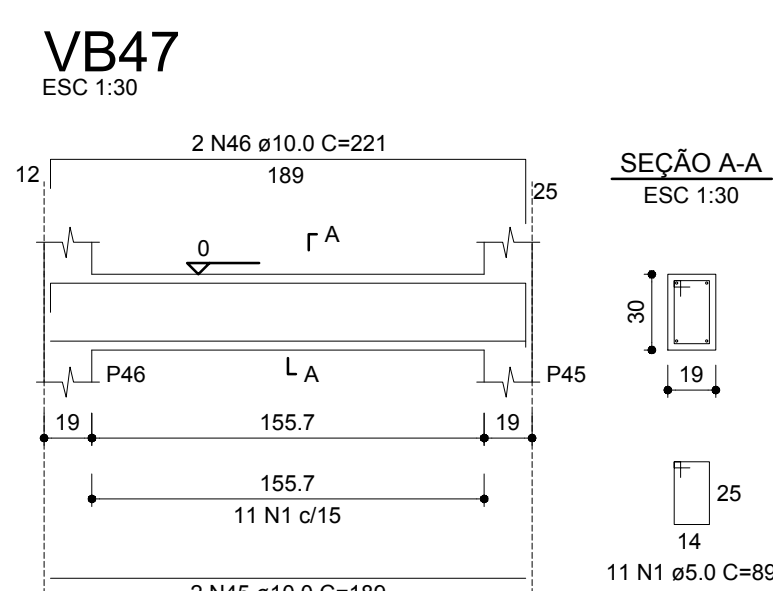
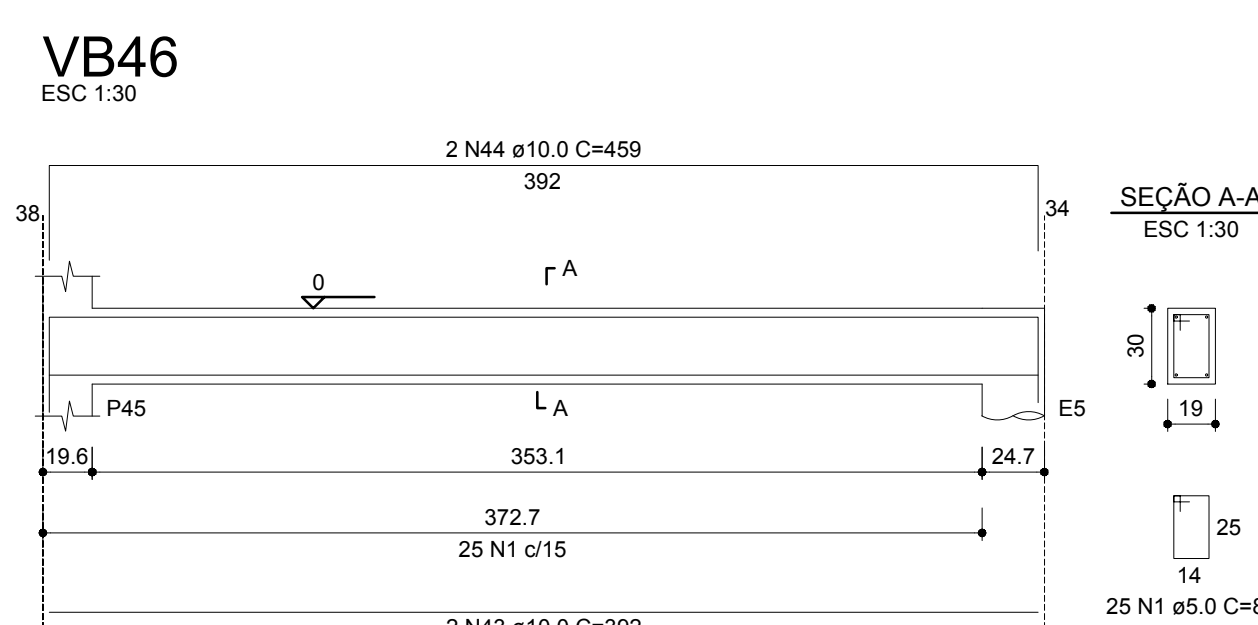
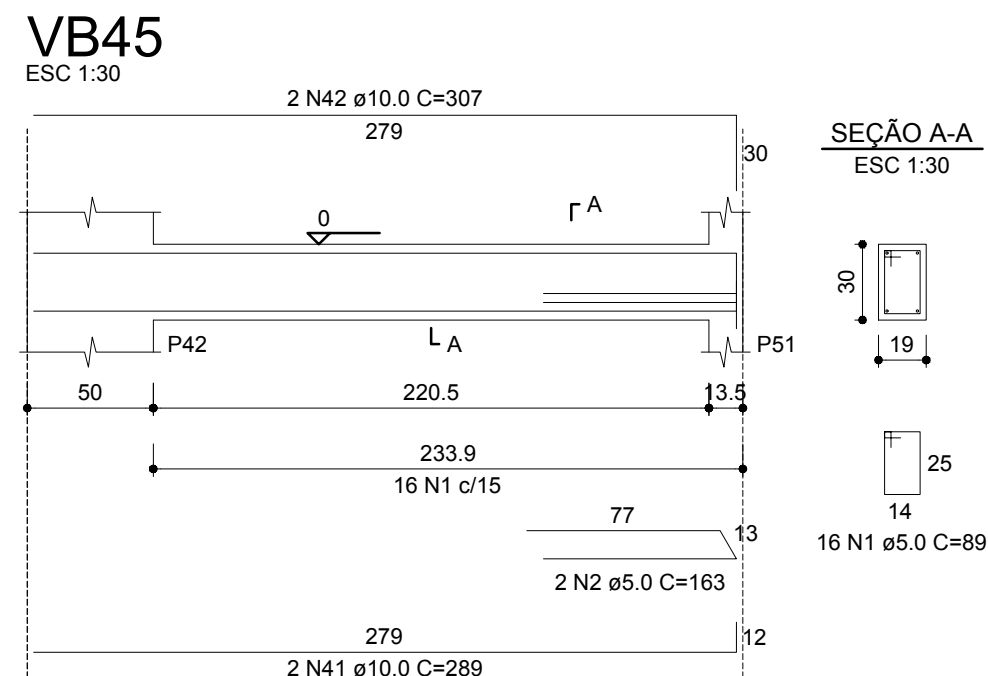
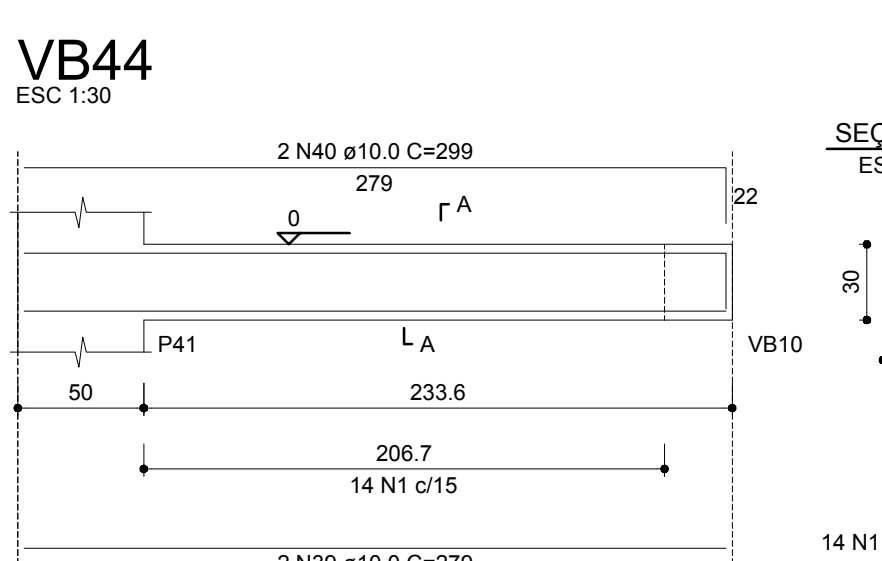
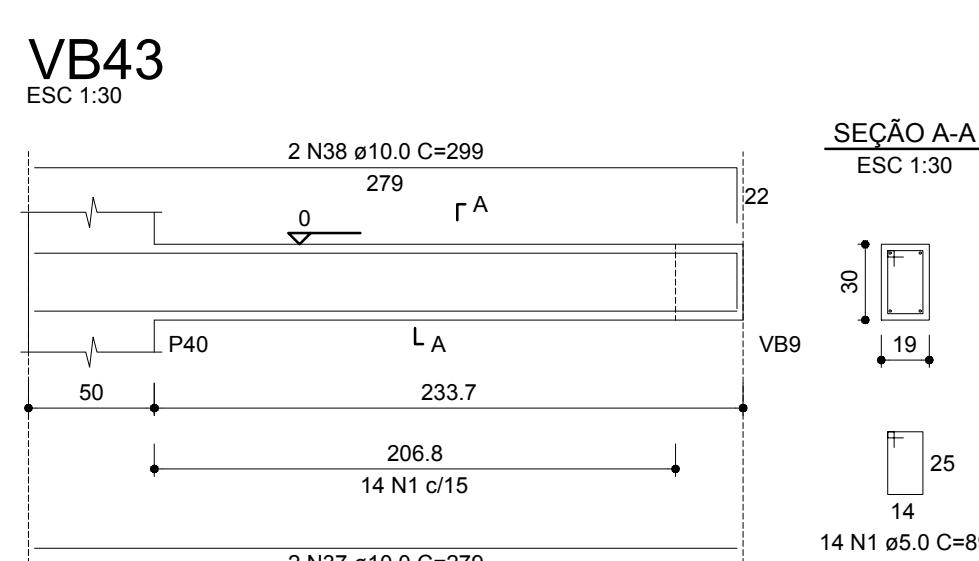


RELAÇÃO DO AÇO		
VB28	VB29	VB30
VB31	VB32	VB33
VB34	VB35	VB36
VB37	VB38	VB39
VB40	VB41	VB42
VB43	VB44	VB45
VB46	VB47	VB48
VB49	VB50	VB51
VB63		

ACQ	N	DIAM	QUANT	CUNIT	TOTAL
CAS0	1	5.0	601	88	5349
	2	5.0	271	52	1426
CAS0	3	5.0	271	52	1426
	4	5.0	271	52	1426
	5	10.0	243	49	1245
	6	10.0	243	49	1245
	7	10.0	243	49	1245
	8	10.0	243	49	1245
	9	10.0	243	49	1245
	10	10.0	243	49	1245
	11	10.0	243	49	1245
	12	10.0	243	49	1245
	13	10.0	270	540	1440
	14	10.0	270	540	1440
	15	10.0	270	540	1440
	16	10.0	270	540	1440
	17	10.0	270	540	1440
	18	10.0	270	540	1440
	19	10.0	270	540	1440
	20	10.0	270	540	1440
	21	10.0	270	540	1440
	22	10.0	270	540	1440
	23	10.0	270	540	1440
	24	10.0	270	540	1440
	25	10.0	191	382	1045
	26	10.0	191	382	1045
	27	10.0	191	382	1045
	28	10.0	191	382	1045
	29	10.0	191	382	1045
	30	10.0	191	382	1045
	31	10.0	191	382	1045
	32	10.0	191	382	1045
	33	10.0	191	382	1045
	34	10.0	191	382	1045
	35	10.0	191	382	1045
	36	10.0	191	382	1045
	37	10.0	279	558	1497
	38	10.0	279	558	1497
	39	10.0	279	558	1497
	40	10.0	279	558	1497
	41	10.0	279	558	1497
	42	10.0	307	614	1641
	43	10.0	369	738	1986
	44	10.0	369	738	1986
	45	10.0	369	738	1986
	46	10.0	369	738	1986
	47	10.0	369	738	1986
	48	10.0	369	738	1986
	49	10.0	369	738	1986
	50	10.0	369	738	1986
	51	10.0	1175	2350	6150
	52	110.0	279	558	1497
	53	110.0	279	558	1497
	54	110.0	279	558	1497
	55	110.0	279	558	1497
	56	110.0	279	558	1497
	57	110.0	279	558	1497
	58	110.0	279	558	1497
	59	110.0	279	558	1497
	60	110.0	279	558	1497
	61	110.0	279	558	1497
	62	110.0	279	558	1497
	63	110.0	279	558	1497
	64	110.0	279	558	1497
	65	110.0	279	558	1497
	66	110.0	279	558	1497
	67	110.0	279	558	1497
	68	110.0	279	558	1497
	69	110.0	279	558	1497
	70	110.0	279	558	1497
	71	110.0	279	558	1497
	72	110.0	279	558	1497
	73	110.0	279	558	1497
	74	110.0	279	558	1497
	75	110.0	279	558	1497
	76	110.0	279	558	1497
	77	110.0	279	558	1497
	78	110.0	279	558	1497
	79	110.0	279	558	1497



AÇO	DIAM (mm)	C.TOTAL (m)	PESO + 10% (kg)
CA50	10.0	479.6	325.3
CA60	5.0	541.4	01.8

Volume de concreto (C-25) = 5.95 m

Área de forma = 82,47 m<sup>2</sup>

		<p align="center"><b>PREFEITURA MUNICIPAL</b> <b>DE DIVINO - MG</b></p>	
<p align="center"><b>SELO</b> <b>BRASIL 2014</b></p>			
DATA: 17/01/2022	ASS: Marcos	PROJETO: MASCOS	
Nº: 10474	RESPONSÁVEL: JOSE CARLOS	DESCRIÇÃO DO PROJETO: 1	
<p align="center"><b>PROJETO ESTRUTURAL</b></p>			
<p><b>PROJETO:</b></p>			
<p align="center"><b>PREFEITURA MUNICIPAL DE DIVINO - MG</b></p>			
<p><b>CONTÉUDO:</b></p>			
<p align="center"><b>Detalhes das Vigas</b> <b>Pavimento Térreo</b> <b>CEB</b></p>			
<p><b>PROPOSTA:</b></p>		<p><b>DATA:</b> 16.11.2022/2021-08</p>	
<p>PROJETO: RECONSTRUÇÃO DE COBERTURA ESCOLA COM RUA ANDRÉO CAMPOS FERREIRA</p>		<p>END: 10861-100 ARAGUATINGA - SP</p>	
<p><b>TÍTULO:</b></p>			
<p align="center"><b>ADRIANO CAMPOS DE EDUCAÇÃO E CULTURA</b></p>			
<p><b>AUTOR PROJETO: ARQUITETO(A) RGT:</b></p>			
<p align="center"><b>CLÁUDIO DE MELO ROCHA</b></p>		<p align="center"><b>COLETA DE DADOS: 1</b></p>	
<p><b>ESTABELECIMENTO:</b></p>			
<p><b>ACB: CA-50 e CA-60</b></p>		<p><b>CONCRETO: Fck = 25,0 Mpa</b></p>	
<b>VERSÃO: 1</b>	<b>DATA: 01/06/2022</b>	<b>AUTORIZAÇÃO:</b>	<b>FOI:</b>
<p><b>ARQUIVO: BASE GERAR CIL DIVINO MG</b></p>		<p align="right"><b>26/32</b></p>	